

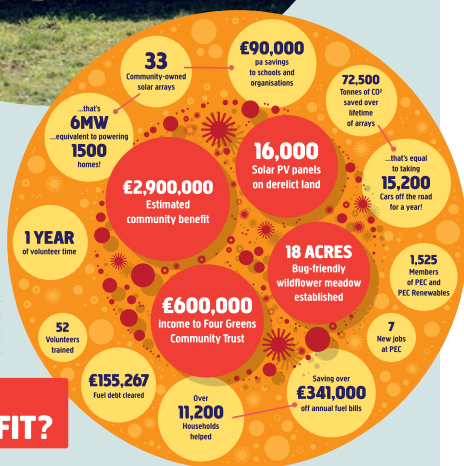
PLYMOUTH ENERGY COMMUNITY

LOCATION: PLYMOUTH, DEVON
DATE OF INVESTMENT: SEPTEMBER 2016

Plymouth Energy Community (PEC) is an award winning Community Benefit Society. SASC provided a £610,000 loan to PEC from the Community Investment Fund. This repaid a construction loan and allowed the community to take ownership of the Ernesettle solar farm. PEC repaid the loan by raising over £1m in community shares.



HOW DOES THE COMMUNITY BENEFIT?



2017 IMPACT DATA



£533,479

SAVED TO HOUSEHOLDS AS A RESULT OF PEC ACTIVITIES



3,700

TONNES OF CO₂ SAVED

CASE STUDY: THE PEC STORY

One in twelve Plymouth households (13.4%) lives in fuel poverty. This is above the UK average of 11%. Being in fuel poverty means that if a household heats its home to a comfortable temperature, its remaining income will put it below the official poverty line. For many people this means having to choose between a healthy, heated home and food on the table. Plymouth also has to contend with a housing stock that is relatively inefficient from an energy perspective.

With support from Plymouth City Council, local residents set up PEC in July 2013 to address fuel poverty and energy efficiency across the city. Since then, PEC has grown from an initial 100 founder member shareholders to include more than 1,300 individual and organisation members today.

PEC started out offering a simple switching and advice service. Today PEC offers affordable or free insulation and boiler schemes, a fuel debt advice service, a volunteering and training programme, a health service referral pilot and an Energy Team of trained advisors who provide home visits to those who need it most.

In 2014 PEC set up another Community Benefit Society called PEC Renewables to build community-owned renewable energy installations in Plymouth. It has installed 32 solar rooftop schemes on schools and public buildings and completed the Ernesettle ground mounted solar array which SASC invested in. So far, PEC Renewables has raised nearly £2.4m in community shares over three separate share offers.

PEC Renewables' community-owned installations bring several benefits. They allow investor members to receive a financial return. They provide low-cost clean energy and a valuable educational resource to the communities where the assets are located. And they contribute to a community benefit fund that will help to ensure a long life for PEC's core services.

PEC continues to be a leading innovator in the field of community energy. It is working with industry partners to develop new business models for the future as the national policy for renewable subsidies changes.



FAMILY ACTION

LOCATION: WEST MIDLANDS

DATE OF INVESTMENT: OCTOBER 2016

With origins that date back to 1869, Family Action is one of the UK's oldest charities. It has a reputation for innovation and works in the Early Years, Children and Families and Adult Mental Health sectors. In 2016 SASC provided a £700,000 investment from the Third Sector Investment Fund. This helped to finance the delivery of an innovative programme that Family Action had developed, called Safe Haven.

Safe Haven provided wraparound support to some of the most vulnerable young people in care in two neighbouring local authorities, Sandwell and Wolverhampton. Support included round-the-clock access to skilled and experienced staff, and to a local Safe Haven – a non-residential centre where the young people could receive help or run to in a crisis. The programme operated from August 2016 to August 2017 and supported a total of 30 young people between the ages of 11 and 17.

Safe Haven was commissioned on a payment by results basis. Although the programme operated for only 12 months, SASC's investment helped to generate positive social outcomes for the young people involved, which have been verified by two independent evaluations. It has also helped to gather a valuable body of new evidence about how such interventions can be beneficial for vulnerable children in care. From a financial standpoint, the programme delivered total local authority savings of £1,380,683. Of the 30 people referred to the programme, eight recorded a lower risk of going missing as a result of support worker intervention and twelve reported significant improvement in school attendance. 22 individuals were interviewed as part of the project – all reported progress in their lives in relation to rebuilding relationships including with their birth families.

IF IT WASN'T FOR SAFE HAVEN, I DON'T THINK I'D BE WHERE I AM NOW ... I'M A MUCH BETTER PERSON, I'M A LOT LESS, WHAT'S THAT WORD? IGNORANT. ... BEFORE I HAD NO SUPPORT. AND I THINK IT'S BECAUSE I'VE GOT THE SUPPORT AND I KNOW THAT PEOPLE CARE I THINK IT'S MAKING ME MORE OF A HAPPY PERSON

Young person accessing Safe Haven support

2017 IMPACT DATA



£1.38m

PUBLIC SAVINGS GENERATED



100%

YOUNG PEOPLE INTERVIEWED REPORTED POSITIVE PROGRESS IN REBUILDING RELATIONSHIPS

HARROGATE SKILLS 4 LIVING CENTRE

LOCATION: HARROGATE, YORKSHIRE

DATE OF INVESTMENTS: AUGUST 2014 AND JUNE 2016

Harrogate Skills 4 Living Centre (HS4LC) is a charity that works with adults with learning disabilities in Harrogate. It provides quality care and essential lifelong skills such as communication and problem solving to over 100 adults. In 2014 and 2016 SASC made two loans totalling £785,000 from the Community Investment Fund. The first of these was SASC's first ever investment. These two loans helped the charity buy two residential care homes. Until then it had offered only day care services. The move to include residential care was a natural extension of HS4LC's activities. In December 2017, HS4LC was able to repay SASC's loan by refinancing it with a commercial lender. This development shows how much more economically robust the charity has become since SASC first became involved.

SASC's investments have had a big impact on HS4LC and its beneficiaries over the last three and a half years. The loans have helped HS4LC diversify its income streams and increase its impact through ownership of two care homes. Using social investment has enabled HS4LC to protect and improve the quality of life for 26 adults with learning disabilities in residential care.

Expanding to become a care home owner and manager has generated additional surpluses for HS4LC. This has boosted the charity's reserves. It is now able to reinvest some of the additional income into improving services and facilities. HS4LC redecorated its day centre, added a sensory room for autistic clients in one of the care homes and refurbished a number of client rooms to better reflect personal preferences. These improvements have led to a better quality of life for students and residents. From a staffing perspective, the investment protected the jobs of 35 people and facilitated the creation of four new additional posts. One of these is a supported employment and job coach. This is a new and exciting area for HS4LC and its clients.



2017 IMPACT DATA



100

INDIVIDUAL LIVELIHOODS IMPROVED



5x

INCREASE IN RESERVES